

Children's Environmental Health Project in Thunder Bay

Think Green



Artwork by Brooke P.

feel green



Kim McGibbon, BAsC, R.D.

Lyne Soramaki, RN, HBScN



Background(2007)

MAY	Children's Enviro Health Workshop
JULY	Brainstorming Session
AUGUST	2008 Divisional Priorities
SEPTEMBER	2008 Program Planning
DECEMBER	Health Unit strategic 5 year plan Development of our first logic model

Why We Used A Logic Model

COMMUNICATION

- External community partners
- Community stakeholders
- CEH Working Group
- Environmental Health Networking Committee
- Other internal staff



Why We Used A Logic Model

CONVENIENCE

- Quick reference
- Avoid searching every program plan
- Provides big picture
- User friendly format
- Comprehensive
- Demonstrates collaboration and cross programming



Why We Used A Logic Model

FLEXIBILITY

- We made it our own!
- It suited our needs
- We added color coded timelines!
- We change it as we go
- Identifies completed tasks



LOGIC MODEL COMPONENTS

Think Green



Be Green



feel green



Artwork by Eksha P.

Long Term Objective

To decrease exposure to environmental health hazards during the reproductive and child health period

Think Green



Attributed by Elvira P.

feel green



Short Term Objectives

- Increase awareness of issues (CEH)
- Develop resources and training opportunities
- Increase number of opportunities to integrate CEH
- Increase networking opportunities
- Increase number of staff trained

Target Audiences

- Expectant couples/ parents
- Schools/daycares/teachers
- Workplaces
- Community partners
- TBDHU staff/management
- Board of Health
- Community at large

Think Green



feel green



Be Green



STRATEGIES

- AWARENESS
- SKILL BUILDING/EDUCATION
- NETWORKING/COLLABORATION
- RESEARCH
- POLICY
- EVALUATION(added to 2009 plan)

COLOR CODED TIMELINES

2008

- SPRING
- SUMMER
- FALL
- WINTER
- ONGOING
- COMPLETED



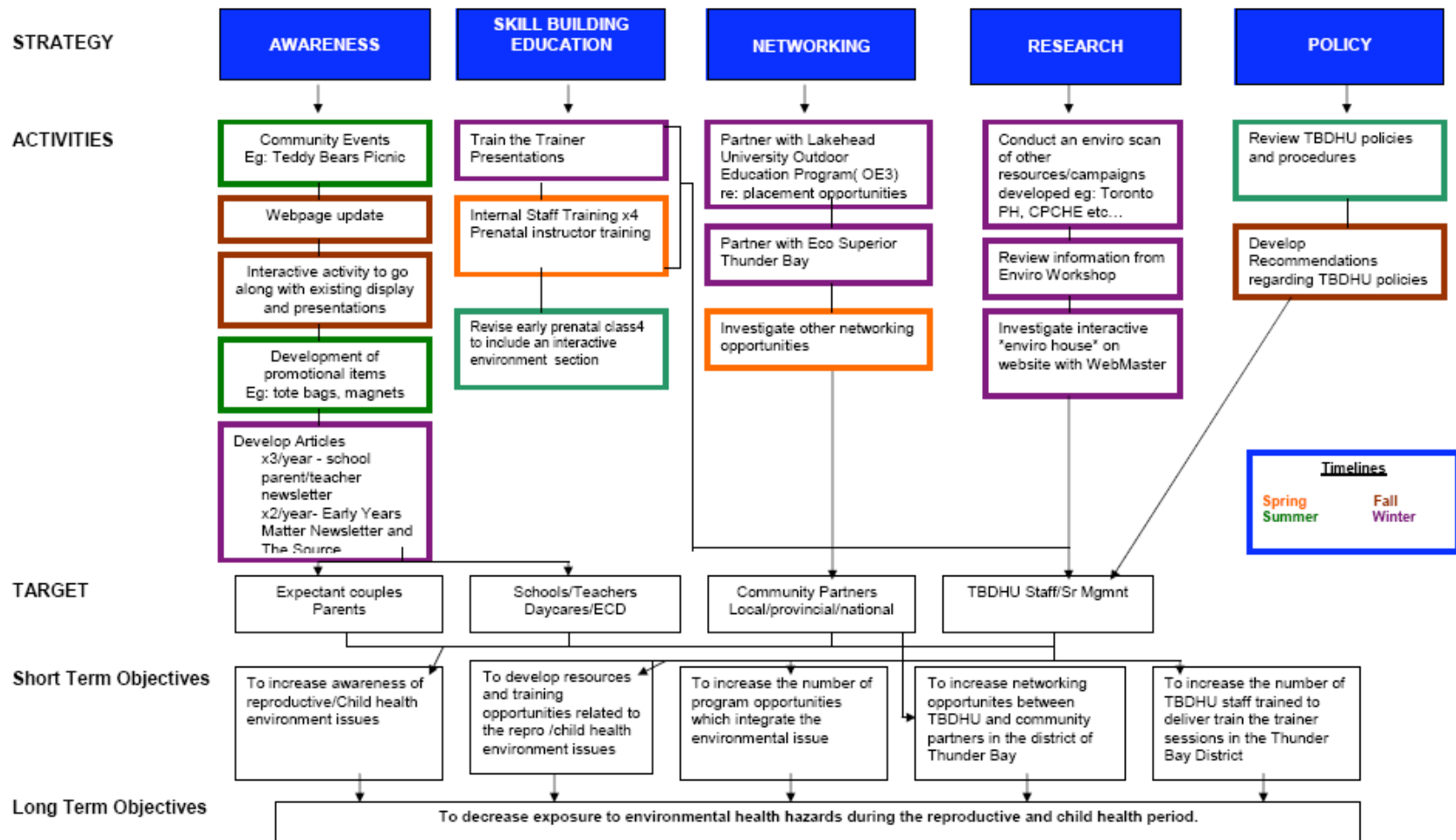
COLOR CODED TIMELINES

2009

- SPRING
- SUMMER
- FALL
- WINTER
- ONGOING
- COMPLETED 

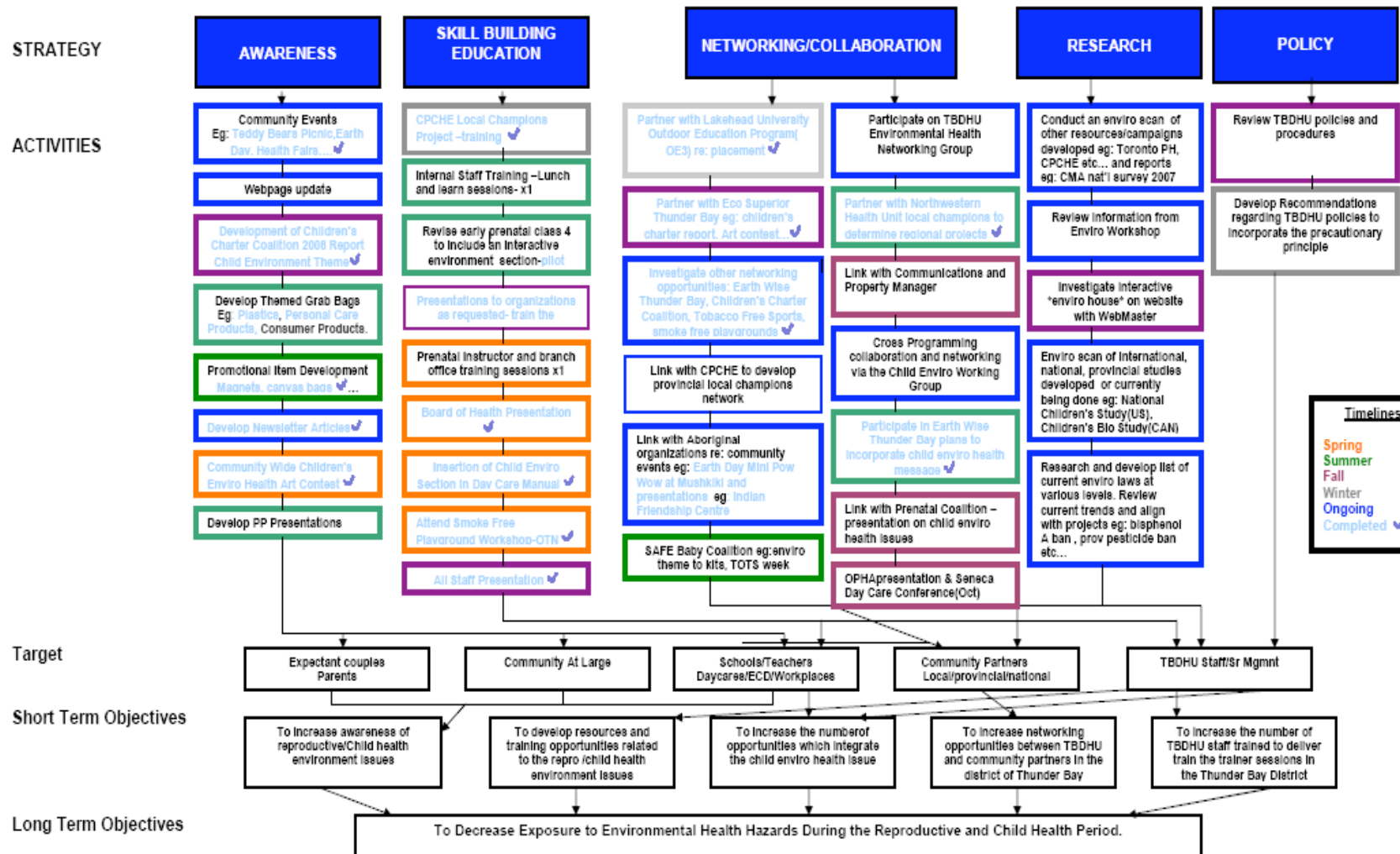


2008 LOGIC MODEL



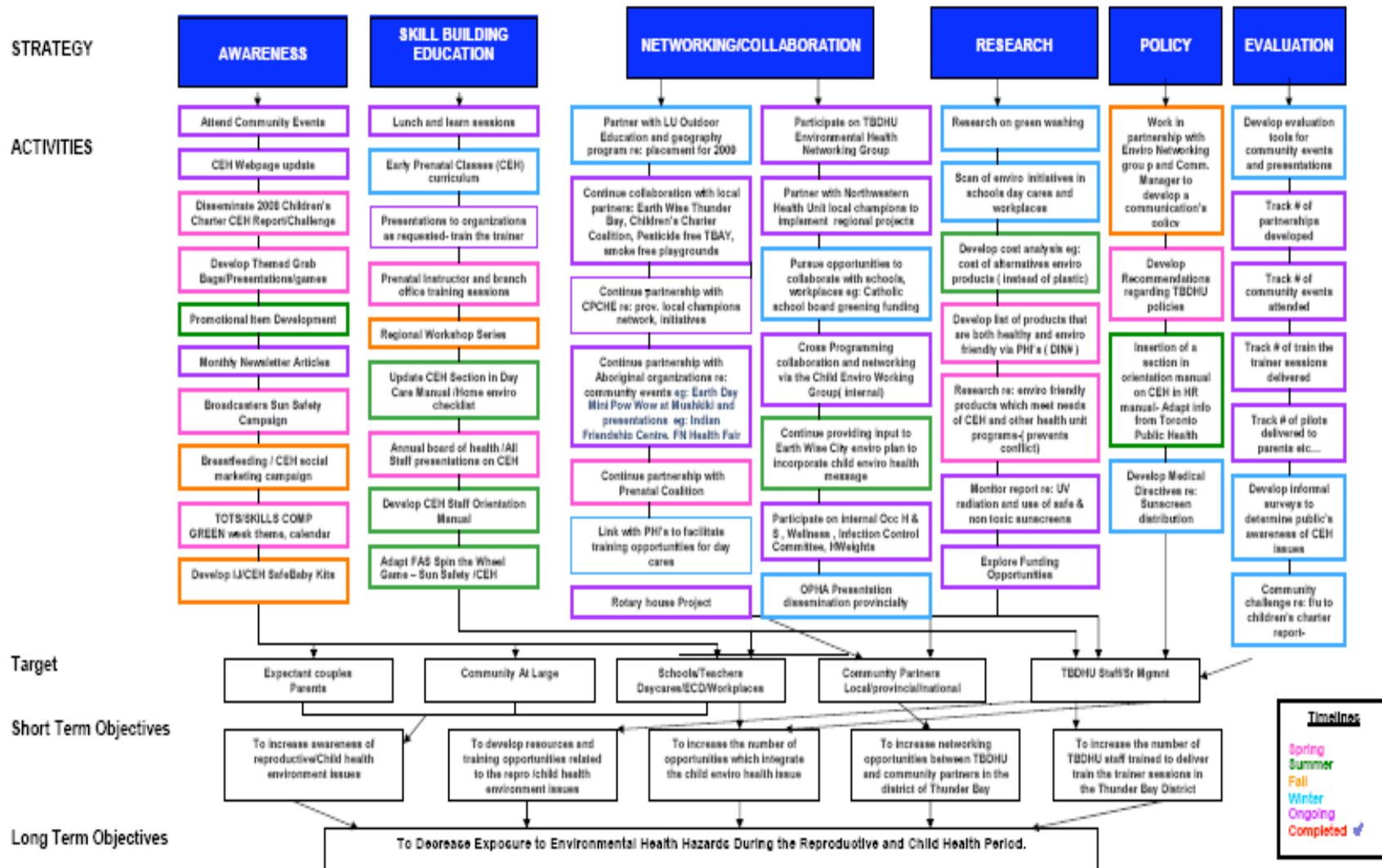
August 2007

2008 LOGIC MODEL



September 2008

2009 Draft Logic Model



2008 ACTIVITIES

Think Green



Be Green



feel green



AWARENESS

Think Green



Be Green



feel green



Children's Health and the Environment

Art Contest!

CONTEST THEME

Children need a safe, comfortable place to live—a healthy environment indoors and out. Show us what our community needs to do to make your environment healthy—at home, at school or wherever you like to be. Make a picture to encourage people to take care of the earth, air and water so that kids can be happy and healthy!

For more contest details and ideas, visit www.tbdhu.com and search "home environment"

Submission Deadline: May 16, 2008

Submissions can be sent to:
Thunder Bay District Health Unit
999 Balmoral St
Thunder Bay, ON P7B 6E7
Attention: Lyne Soramaki
Email: lyne.soramaki@tbdhu.com



**Art entries selected may be used with permission by these participating organizations:*



2008 Children's Charter Report



Charter Media Launch



Charter Media Launch



Charter Media Launch



Picture taken by Lindsay Lafraugh
The Chronicle Journal

C
O
M
M
U
N
I
T
Y



take the
HOME ENVIRONMENT
challenge

Create a healthier environment for you and your growing family.

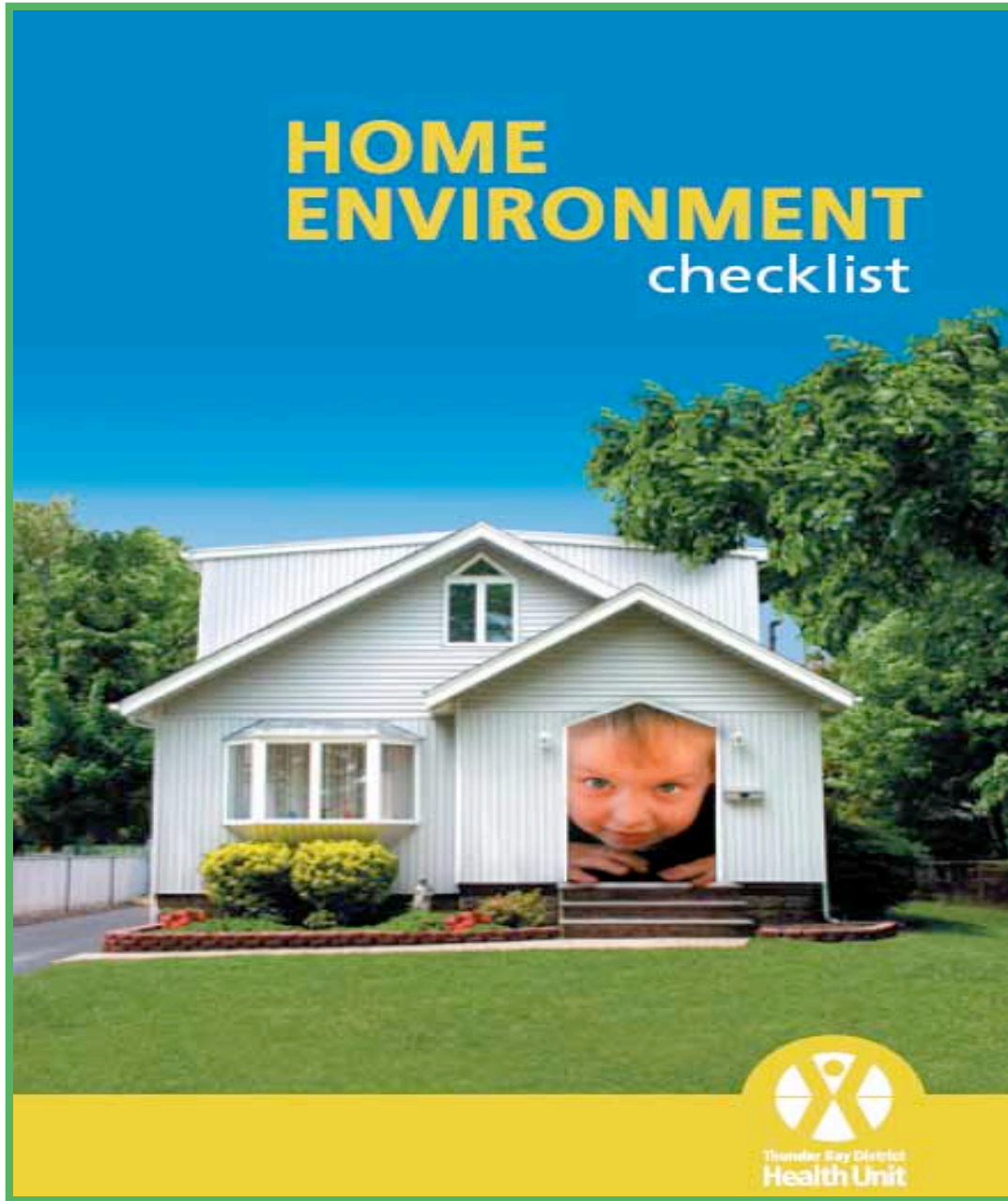
Simple changes can reduce the risk of illnesses such as asthma, allergies, and lead poisoning.



HealthLine
www.healthline.com

C
H
A
L
L
E
N
G
E

HOME ENVIRONMENT checklist



feel green



Thunder Bay District
Health Unit

Community Events



TOTE BAG



WHAT WILL YOU DO TO HELP?

Artwork by Mariah Morrison

MAGNET

Playing it Safer with Plastics

Try glass or stainless steel instead.
Do not microwave plastics.

RECYCLE



disposable bottles
(water, pop)



clear containers



food wrap, freezer &
shopping bags



clouded containers,
food containers



food wrap, shower curtains,
tablecloths, toys



egg cartons, styrofoam cups,
carry-out containers



baby & sports water bottles,
sippy cups



Thunder Bay District
Health Unit
www.tbdhu.com

SKILL BUILDING/EDUCATION

- CPCHE Local Champions (2 TBHU staff)
- Lunch and Learns
- Board of Health Presentation
- All Staff Presentation
- Train the Trainer Sessions

Think Green



feel green



Be Green



Made by Doodle 2



Invites you to:

“Playing It Safer With Plastics”

Presented by
Kathryn Hildebrandt & Lyne Soramaki
Public Health Nurses, TBDHU

Wednesday, October 15th, 2008

Fort William Clinic

Two sessions: 11:45 to 12:15



Join us for a fun, interactive session on healthier ways to use plastic, choosing alternatives, and understanding the different types of plastics!

NETWORK/COLLABORATION

- Aboriginal organizations
- Children's Charter Coalition
- Children's Enviro Working Group
- Earth Wise Thunder Bay
- Eco Superior



Community Sustainability. Environmental Stewardship. Energy Conservation.



EarthWise Draft Plan Open House

Thursday June 19th, 2008 7:00pm-9:00pm
Opening remarks – 7pm

Thunder Bay Community Auditorium Lobby

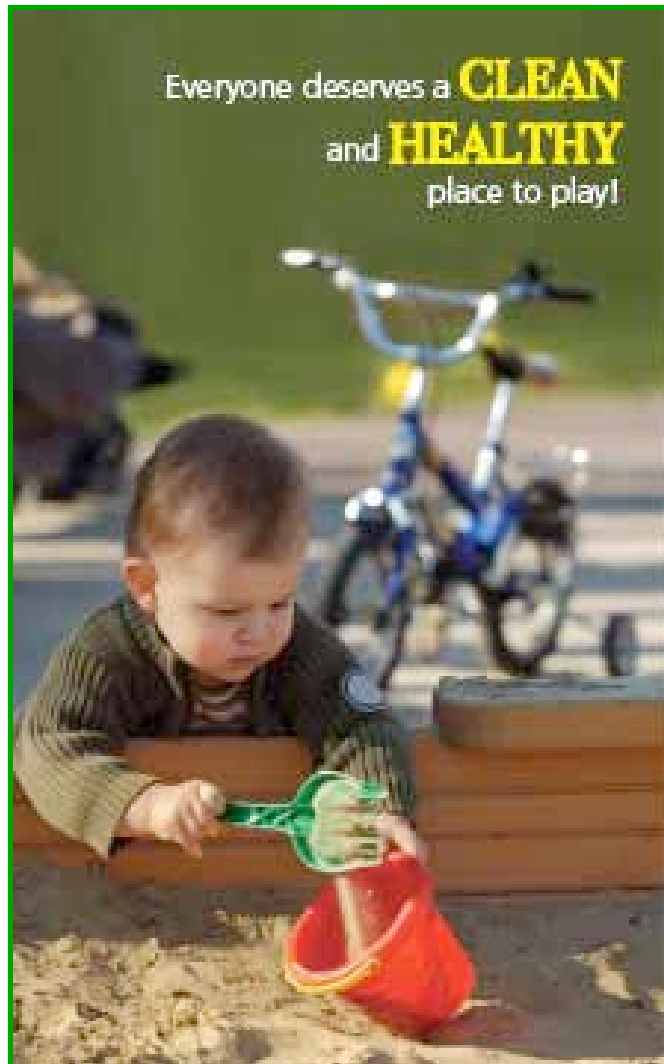
- Review the Draft Plan and provide feedback
- Share your vision for a sustainable community
- Meet the EarthWise Chair, Steering Committee, and members of the Working Groups

www.earthwisethunderbay.com

NETWORK/COLLABORATION

- Internal committees
- Lakehead University
- Northwestern PH/Toronto PH
- Rotary House Project
- Tobacco Free Parks and Beaches

Tobacco Free Parks and Beaches



I am concerned about the use of
TOBACCO INDUSTRY PRODUCTS
at our parks and beaches.

These are the **FACTS**:

- Several trillion cigarette butts are thrown on the ground each year.
- If eaten, it takes only a few cigarette butts to seriously harm a small child.
- Cigarette butts have been found in the stomachs of wildlife.
- Cigarette butts are the #1 cause of man-made forest fires.
- Spit tobacco cans and cigarette filters (a form of plastic) are nearly impossible to break down.
- Empty spit tobacco cans and cigarette butts on the ground send a message to young children that 'everyone is doing it'.

For these reasons, I am asking City Council to amend our current by-law to ban the use of tobacco industry products at local parks and beaches.

Name (please print): _____

Signature: _____

Age Group (check one):

- under 19 19-25 26-45
 46-65 over 65

*Tobacco Free
Thunder Bay*

Tobacco Free Parks and Beaches



Next Steps

- Streamline our current logic model process
- Incorporate budget information
- 3 year plan
- Consider other strategies
(Research, Policy and Evaluation)

QUESTIONS ???

Think Green



feel green



Be Green



Artwork by Brooke P.

For More Information

Lyne Soramaki, RN, HBScN
Thunder Bay District Health Unit

999 Balmoral Street

Thunder Bay, ON, P7B 6E7

Phone: (807) 625-8823

Fax: (807) 625-4825

Email: lyne.soramaki@tbdhu.com